



PRODUCT CATALOGUE

TABLE OF CONTENTS

Page No	Contents
03	ABOUT TAGLUS
	ALIGNER SHEETS
04	TAGLUS PU FLEX
10	TAGLUS PREMIUM
	RETAINER SHEETS
17	TAGLUS TUFF
	TAGLUS ARCH SHEETS
23	TAGLUS ARCH
	TAGLUS THERMOFORMING SOLUTIONS
33	TAGLUS AUTOFORM (Ø125mm Sheets)
35	TAGLUS AUTOFORM (Roll)
37	TAGLUS DUOFORM
	AUTOMATED TRIMMING SOLUTIONS
40	LASER ALIGNER CUTTER (LAC)
42	LAC SEPARATOR
44	LAC SUCTION UNIT
45	LAC TRIMLINE SOFTWARE
	TAGLUS 3D PRINTING RESINS
47	MODEL RESIN
50	MODEL RESIN ODOURLESS & WATER WASHABLE
	AUTOMATED THERMOFORMING SOLUTIONS
52	AUTOMATED THERMOFORMING ROLLS
	TAGLUS ORTHODONTIC ACCESSORIES
57	ORTHODONTIC ACCESSORIES

ABOUT TAGLUS



Taglus started with a mission to offer newer, innovative production solutions for dental laboratories and practices globally. Over the years, it has established itself as a distinguished brand for thermoplastic aligners and retainer sheets. Having earned the essential international quality assurance certifications, Taglus materials conform to the highest quality standards.

Taglus is committed to being the best solution while delivering leading-edge technology with a customer-first mindset every step of the way.

Through our continuous efforts to improve performance; we ensure the highest possible product quality and value to meet the patient's needs and expectations. Our niche products will enable dental professionals to transform smiles with higher predictability, improved outcomes, and enhanced patient satisfaction.

Our vision is to continue to be recognised as the best-in-class through innovation, unmatched quality, and the highest standards of service through our products. Based on our core values of integrity and commitment to excellence we continue to build relationships with our clients based on trust and satisfaction.



The Smartest Polyurethane Material



WHAT IS TAGLUS PU FLEX ?

Taglus® PU Flex is a homogeneous polyurethane sheet that consists of linear polymeric chains made of alternating flexible and rigid segments. It is a high-performance aligner and retainer material that provides excellent flexibility, strength, and durability, while also providing comfort for the wearer.

ABOUT TAGLUS PU FLEX

Taglus® PU flex comprises of flexible segments that have a low glass transition temperature while the rigid segments exhibit a high melting point. This eliminates the multilayer formation yet achieves all its properties in a single layer. The unique modification of these phases makes it possible to have properties such as cold-flexibility, soft-touch, wear and abrasion resistance, chemical resistance, scratch and tear resistance.

DIMENSIONS

		THICKNESS	
		(mm)	(Inch)
⊘	125mm		
⊘	120mm	0.45	0.018"
■	120mm x 120mm	0.76	0.030"
■	125mm x 125mm	1.02	0.040"

Available in Round, Square, Arch & Roll Form

**Some variations are inherent to plastic testing, and preceeding data is considered to be approximate representative of mean values. Vedia Solutions makes no representation that the material in any representation, in any particular shipment, exactly confirms the values determined. Conversions from customary metric/US values may have been rounded and therefore may not be exact conversions. Neither Vedia Solutions nor its marketing affiliates will be responsible for the use of this information or any product method or device mentioned, and you must make your own determination of its suitability and completeness for your own use and purchasers of your products.

NO WARANTEE IS MADE OF THE MERCHANTABILITY OR SUITABILITY OF ANY PRODUCT AND NOTHING HEREIN STATES ANY OF THE SELLER'S TERMS OF SALE.

PHYSICAL PROPERTIES

TENSILE STRESS

In applications where plastic films are designed to withstand orthodontic forces in an aligner, the mechanical properties of polymers namely Strength, Stiffness & Toughness play a vital role. Such properties of Taglus® PU Flex sheets when investigated using standardized test methods, e.g. tensile stress as per ASTM D 638: 2014 by briefly applying load in one direction the approximate results and values observed during such test, demonstrate that Taglus® PU Flex has the highest tensile stress at the break in its class approximately equal to 61 MPa. So, it is an optimal balance of rigidity with elasticity. The test was performed by a NABL accredited Laboratory complying with ISO/IEC 17025 Laboratory Management System.

IMPACT STRENGTH

Owing to the presence of alternating flexible and rigid segments, the polymer toughness is highly increased. When measured Un-notched Izod Impact Strength as per ASTM D256 @73°F (23°C) in 0.125" thickness, the value was approximately 85 J/m (No Break) indicating it is a virtually unbreakable aligner thermoforming foil.

ELONGATION AT BREAK

Taglus® PU Flex sheets have a very high value of elongation at break. With an approximate value of 100%, the material can stretch up to 100 percent of its original dimensions before it breaks, this eliminates the worries of aligner cracking.

WATER ABSORPTION

The water absorption data is important to understand the performance of the Taglus® PU Flex sheets during processing e.g. Thermoforming as well as in water or humid environments especially in saliva in the mouth, to avoid premature moisture-related failures. Taglus® PU Flex sheets when tested for 24 hours water absorption test exhibited only 0.15% weight changes against the industry-accepted chemical resistance standard of <3%.

CLARITY:

The photographs of Taglus® PU Flex sheets when compared with other PU-based aligner sheets show a noticeable difference in the clarity of the object placed at a distance from the sheet. Taglus® PU Flex sheets have the highest clarity in their class of other PU-based aligner thermoforming foils.

BIOCOMPATIBILITY TESTING

TAGLUS thermoforming files have passed biocompatibility testing namely skin sensitization , in vitro cytotoxicity and skin irritation test as a regulatory requirement for demonstrating the preclinical safety of medical devices, this is evaluated in accordance with the standard guideline, published by the US FDA “Use of International Standard ISO 10993-1, “Biological evaluation of medical devices - Part 1:Evaluation and testing within a risk management process” which can be accessed at <https://www.fda.gov/media/download>, issued on September 4th 2020 and originally published on June 16th 2016.



WORKING INSTRUCTIONS: HEATING TIME

	0.018" (0.45mm)	0.030" (0.762mm)	0.040" (1.020mm)
BioSTAR MiniSTAR / MiniSTAR S	Code 102 / Code 112 / Code 122	Code 122 / Code 132 / Code 142	Code 142 / Code 152 / Code 162
Dreve Druformat Scan	Heating - 0:55 Cooling - 1:20	Heating - 1:10 Cooling - 1:20	Heating - 1:25 Cooling - 1:20

MiniSTAR/BioSTAR are trademarks of Scheu Dental Technology. Druformat Scan is trademark of Dreve Dentamid. Erkodent is trademark of ERKODENT Erich Kopp GmbH. TRACK®-V is trademark of FORESTADENT - Bernhard Foerster GmbH.

Pressure should be set ABOVE 4 Bars. Temperature is at MACHINE default.

Taglus Sheets are protected by masking sheets, remove the protective sheets AFTER thermoforming and finishing.

Above times are general guidelines only, as each individual machine acts slightly different.

If the plastic does not adapt well to the model, add or reduce 5 seconds to heating time until the result is ideal.

If plastic forms folds, results in NOT clear tray OR shows bubble formation, recalibrate your heating element or reduce heating time until the result is ideal.

For any clinical and Lab related questions, please do not hesitate to contact us at info@taglus.com and in case of any serious incident that has occurred in relation to this medical device contact us at info@taglus.com and the competent authority of the Member State in which the user and/or patient is established.



The Finest Aligner Material



 **TAGLUS[®] PREMIUM**
The Finest Aligner Material

WHAT IS TAGLUS ?

>TOUGH

>TRANSPARENT

>FLEXIBLE

Our addition of special grade glycol to PET removes the hazing effect seen during heating and also prevents an undesirable crystallization. Additionally, the inclusion of glycol in this composition transforms the inner walls of aligner/retainer into a more comfortable material to the patient. So the Taglus premium is an unique engineering combination of elasticity with rigidity and clarity a perfect balance.

ABOUT TAGLUS PREMIUM™

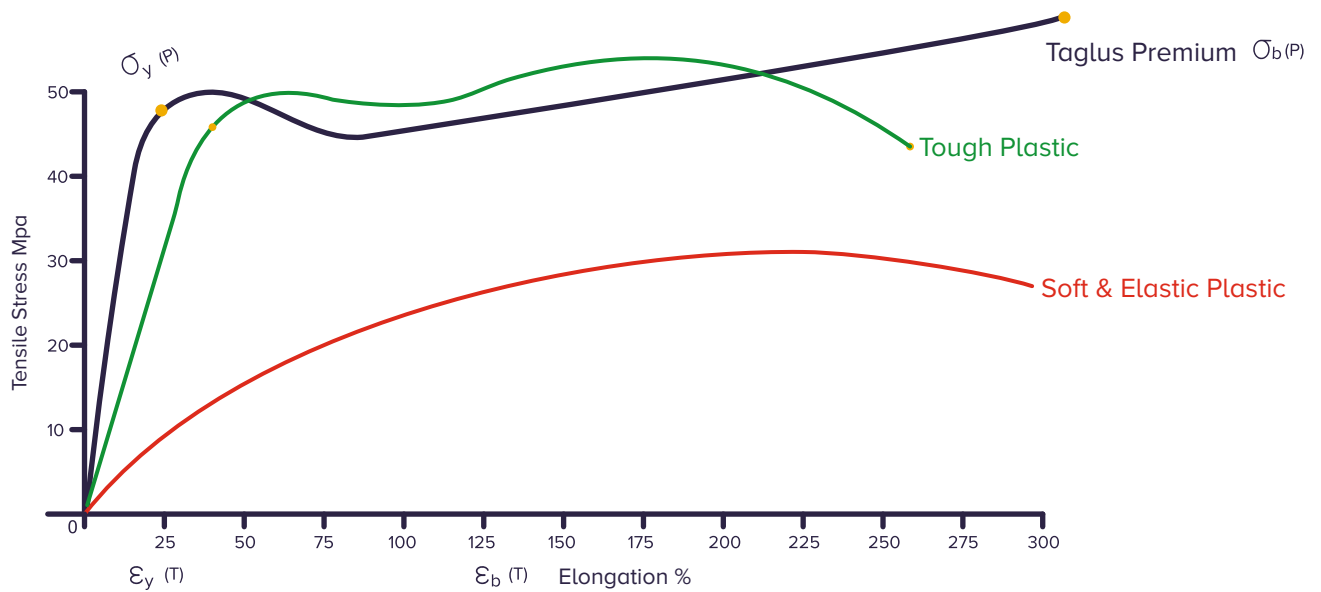
Taglus Premium is an innovative aligner and retainer material with superior material properties and enhanced esthetics. As a unique engineering combination of elasticity with matchless rigidity and crack resistance, it offers the most optical clarity along with stain resistance for enhanced esthetics.

SIZES

DIMENSIONS	THICKNESS	
	(mm)	(Inch)
⌀ 125mm	0.5	0.020"
⌀ 120mm	0.762	0.030"
■ 120mm x 120mm	1.02	0.040"
■ 120mm x 120mm	1.5	0.060"
■ 125mm x 125mm	2.0	0.080"

Available in Round, Square, Arch & Roll Form

TAGLUS RETAINER & ALIGNER PROPERTIES



TENSILE STRESS

In applications where plastic films are designed to withstand orthodontic forces in an aligner, the mechanical properties of polymers namely Strength, stiffness and toughness play a vital role. Such properties of Taglus premium sheets when investigated using standardised test methods, e.g. tensile stress as per ASTM D638: 2014 by briefly applying load in one direction the approximate results and values observed during such test, demonstrate that Taglus Premium is a unique balance of rigidity with elasticity. The test was performed by an NABL accredited Laboratory complying with ISO/IEC 17025 Laboratory Management System.

TENSILE MODULUS OF ELASTICITY

Tensile Modulus, or Youngs Modulus, widely known as the tendency of an object to deform along an axis when opposing forces are applied along that axis; and defined as the ratio of tensile stress to tensile strain. TAGLUS Premium sheets having a very high tensile modulus of approximately upto 1800-2200 MPa, tested as per ASTM D638:2014 give the best crack-free aligners and retainers.

The raw material used to manufacture TAGLUS is compiled in accordance with various agencies worldwide as follows:

BIOCOMPATIBILITY TESTING

Taglus thermoforming foils have passed biocompatibility testing namely Skin Sensitization, in vitro Cytotoxicity and Skin Irritation test as a regulatory requirement for demonstrating the preclinical safety of medical devices, this is evaluated in accordance with the standard guideline, published by the US FDA “Use of International Standard ISO 10993-1” Biological evaluation of medical devices —Part 1: Evaluation and testing within a risk management process “ which can be accessed at <https://www.fda.gov/media/85865/download>, issued on September 4th 2020 and originally published on June 16th, 2016.

Scan to view test report



WORKING INSTRUCTIONS: HEATING TIME

	0.020" (0.5mm)	0.030" (0.762mm)	0.040" (1.020mm)	0.060" (1.5mm)	0.080" (2.0mm)
BioSTAR MiniSTAR / MiniSTAR S	Code 103/ Code 113	Code 103/ Code 113/ Code 123	Code 113/ Code 123/ Code 133	Code 133/ Code 143 / Code 153	Code 184/ Code 194/ Code 204
Dreve Druformat Scan	Heating - 0:55 Cooling - 1:20	Heating - 1:05 Cooling - 1:30	Heating - 1:10 Cooling - 1:40	Heating - 1:30 Cooling - 2:00	Heating - 2:00 Cooling - 2:20

MiniSTAR/BioSTAR are trademarks of Scheu Dental Technology. Druformat Scan is trademark of Dreve Dentamid. Erkodent is trademark of ERKODENT Erich Kopp GmbH. TRACK®-V is trademark of FORESTADENT - Bernhard Foerster GmbH.

Pressure should be set ABOVE 4 Bars. Temperature is at MACHINE default.

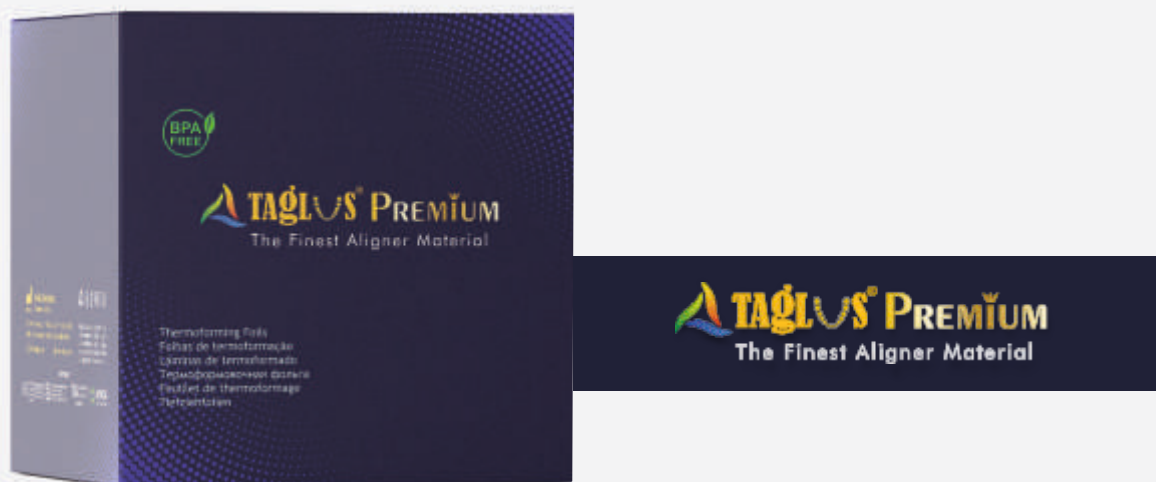
Taglus Sheets are protected by masking sheets, remove the protective sheets AFTER thermoforming and finishing.

Above times are general guidelines only, as each individual machine acts slightly different.

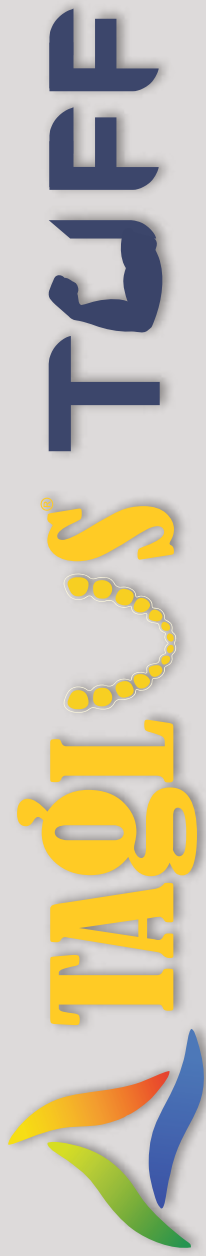
If the plastic does not adapt well to the model, add or reduce 5 seconds to heating time until the result is ideal.

If plastic forms folds, results in NOT clear tray OR shows bubble formation, recalibrate your heating element or reduce heating time until the result is ideal. For any clinical and Lab related questions, please do not hesitate to contact us at info@taglus.com and in case of any serious incident that has occurred in relation to this medical device contact us at info@taglus.com and the competent authority of the Member State in which the user and/or patient is established.

THERMOFORMING ALIGNER SHEETS



Available in: Arch | Round 120mm | Round 125mm | Square | Roll form



The Ultimate Retainer Material (*Patent Pending*)

TAGLUS TUFF

The Ultimate Retainer Material (*Patent Pending)



Thermoforming foils



✉ info@taglus.com
🌐 www.taglus.com

MADE IN
INDONESIA

YON. Abadi Perantara, J. P. (Unit of Legal Department, P. 04, L. 03)
KIDULAN, C. 01, 02, 03, 04, 05, 06, 07, 08, 09, 10, 11, 12, 13, 14, 15, 16, 17, 18, 19, 20, 21, 22, 23, 24, 25, 26, 27, 28, 29, 30, 31, 32, 33, 34, 35, 36, 37, 38, 39, 40, 41, 42, 43, 44, 45, 46, 47, 48, 49, 50, 51, 52, 53, 54, 55, 56, 57, 58, 59, 60, 61, 62, 63, 64, 65, 66, 67, 68, 69, 70, 71, 72, 73, 74, 75, 76, 77, 78, 79, 80, 81, 82, 83, 84, 85, 86, 87, 88, 89, 90, 91, 92, 93, 94, 95, 96, 97, 98, 99, 100, 101, 102, 103, 104, 105, 106, 107, 108, 109, 110, 111, 112, 113, 114, 115, 116, 117, 118, 119, 120, 121, 122, 123, 124, 125, 126, 127, 128, 129, 130, 131, 132, 133, 134, 135, 136, 137, 138, 139, 140, 141, 142, 143, 144, 145, 146, 147, 148, 149, 150, 151, 152, 153, 154, 155, 156, 157, 158, 159, 160, 161, 162, 163, 164, 165, 166, 167, 168, 169, 170, 171, 172, 173, 174, 175, 176, 177, 178, 179, 180, 181, 182, 183, 184, 185, 186, 187, 188, 189, 190, 191, 192, 193, 194, 195, 196, 197, 198, 199, 200, 201, 202, 203, 204, 205, 206, 207, 208, 209, 210, 211, 212, 213, 214, 215, 216, 217, 218, 219, 220, 221, 222, 223, 224, 225, 226, 227, 228, 229, 230, 231, 232, 233, 234, 235, 236, 237, 238, 239, 240, 241, 242, 243, 244, 245, 246, 247, 248, 249, 250, 251, 252, 253, 254, 255, 256, 257, 258, 259, 260, 261, 262, 263, 264, 265, 266, 267, 268, 269, 270, 271, 272, 273, 274, 275, 276, 277, 278, 279, 280, 281, 282, 283, 284, 285, 286, 287, 288, 289, 290, 291, 292, 293, 294, 295, 296, 297, 298, 299, 300, 301, 302, 303, 304, 305, 306, 307, 308, 309, 310, 311, 312, 313, 314, 315, 316, 317, 318, 319, 320, 321, 322, 323, 324, 325, 326, 327, 328, 329, 330, 331, 332, 333, 334, 335, 336, 337, 338, 339, 340, 341, 342, 343, 344, 345, 346, 347, 348, 349, 350, 351, 352, 353, 354, 355, 356, 357, 358, 359, 360, 361, 362, 363, 364, 365, 366, 367, 368, 369, 370, 371, 372, 373, 374, 375, 376, 377, 378, 379, 380, 381, 382, 383, 384, 385, 386, 387, 388, 389, 390, 391, 392, 393, 394, 395, 396, 397, 398, 399, 400, 401, 402, 403, 404, 405, 406, 407, 408, 409, 410, 411, 412, 413, 414, 415, 416, 417, 418, 419, 420, 421, 422, 423, 424, 425, 426, 427, 428, 429, 430, 431, 432, 433, 434, 435, 436, 437, 438, 439, 440, 441, 442, 443, 444, 445, 446, 447, 448, 449, 450, 451, 452, 453, 454, 455, 456, 457, 458, 459, 460, 461, 462, 463, 464, 465, 466, 467, 468, 469, 470, 471, 472, 473, 474, 475, 476, 477, 478, 479, 480, 481, 482, 483, 484, 485, 486, 487, 488, 489, 490, 491, 492, 493, 494, 495, 496, 497, 498, 499, 500, 501, 502, 503, 504, 505, 506, 507, 508, 509, 510, 511, 512, 513, 514, 515, 516, 517, 518, 519, 520, 521, 522, 523, 524, 525, 526, 527, 528, 529, 530, 531, 532, 533, 534, 535, 536, 537, 538, 539, 540, 541, 542, 543, 544, 545, 546, 547, 548, 549, 550, 551, 552, 553, 554, 555, 556, 557, 558, 559, 560, 561, 562, 563, 564, 565, 566, 567, 568, 569, 570, 571, 572, 573, 574, 575, 576, 577, 578, 579, 580, 581, 582, 583, 584, 585, 586, 587, 588, 589, 590, 591, 592, 593, 594, 595, 596, 597, 598, 599, 600, 601, 602, 603, 604, 605, 606, 607, 608, 609, 610, 611, 612, 613, 614, 615, 616, 617, 618, 619, 620, 621, 622, 623, 624, 625, 626, 627, 628, 629, 630, 631, 632, 633, 634, 635, 636, 637, 638, 639, 640, 641, 642, 643, 644, 645, 646, 647, 648, 649, 650, 651, 652, 653, 654, 655, 656, 657, 658, 659, 660, 661, 662, 663, 664, 665, 666, 667, 668, 669, 670, 671, 672, 673, 674, 675, 676, 677, 678, 679, 680, 681, 682, 683, 684, 685, 686, 687, 688, 689, 690, 691, 692, 693, 694, 695, 696, 697, 698, 699, 700, 701, 702, 703, 704, 705, 706, 707, 708, 709, 710, 711, 712, 713, 714, 715, 716, 717, 718, 719, 720, 721, 722, 723, 724, 725, 726, 727, 728, 729, 730, 731, 732, 733, 734, 735, 736, 737, 738, 739, 740, 741, 742, 743, 744, 745, 746, 747, 748, 749, 750, 751, 752, 753, 754, 755, 756, 757, 758, 759, 760, 761, 762, 763, 764, 765, 766, 767, 768, 769, 770, 771, 772, 773, 774, 775, 776, 777, 778, 779, 780, 781, 782, 783, 784, 785, 786, 787, 788, 789, 790, 791, 792, 793, 794, 795, 796, 797, 798, 799, 800, 801, 802, 803, 804, 805, 806, 807, 808, 809, 810, 811, 812, 813, 814, 815, 816, 817, 818, 819, 820, 821, 822, 823, 824, 825, 826, 827, 828, 829, 830, 831, 832, 833, 834, 835, 836, 837, 838, 839, 840, 841, 842, 843, 844, 845, 846, 847, 848, 849, 850, 851, 852, 853, 854, 855, 856, 857, 858, 859, 860, 861, 862, 863, 864, 865, 866, 867, 868, 869, 870, 871, 872, 873, 874, 875, 876, 877, 878, 879, 880, 881, 882, 883, 884, 885, 886, 887, 888, 889, 890, 891, 892, 893, 894, 895, 896, 897, 898, 899, 900, 901, 902, 903, 904, 905, 906, 907, 908, 909, 910, 911, 912, 913, 914, 915, 916, 917, 918, 919, 920, 921, 922, 923, 924, 925, 926, 927, 928, 929, 930, 931, 932, 933, 934, 935, 936, 937, 938, 939, 940, 941, 942, 943, 944, 945, 946, 947, 948, 949, 950, 951, 952, 953, 954, 955, 956, 957, 958, 959, 960, 961, 962, 963, 964, 965, 966, 967, 968, 969, 970, 971, 972, 973, 974, 975, 976, 977, 978, 979, 980, 981, 982, 983, 984, 985, 986, 987, 988, 989, 990, 991, 992, 993, 994, 995, 996, 997, 998, 999, 1000, 1001, 1002, 1003, 1004, 1005, 1006, 1007, 1008, 1009, 1010, 1011, 1012, 1013, 1014, 1015, 1016, 1017, 1018, 1019, 1020, 1021, 1022, 1023, 1024, 1025, 1026, 1027, 1028, 1029, 1030, 1031, 1032, 1033, 1034, 1035, 1036, 1037, 1038, 1039, 1040, 1041, 1042, 1043, 1044, 1045, 1046, 1047, 1048, 1049, 1050, 1051, 1052, 1053, 1054, 1055, 1056, 1057, 1058, 1059, 1060, 1061, 1062, 1063, 1064, 1065, 1066, 1067, 1068, 1069, 1070, 1071, 1072, 1073, 1074, 1075, 1076, 1077, 1078, 1079, 1080, 1081, 1082, 1083, 1084, 1085, 1086, 1087, 1088, 1089, 1090, 1091, 1092, 1093, 1094, 1095, 1096, 1097, 1098, 1099, 1100, 1101, 1102, 1103, 1104, 1105, 1106, 1107, 1108, 1109, 1110, 1111, 1112, 1113, 1114, 1115, 1116, 1117, 1118, 1119, 1120, 1121, 1122, 1123, 1124, 1125, 1126, 1127, 1128, 1129, 1130, 1131, 1132, 1133, 1134, 1135, 1136, 1137, 1138, 1139, 1140, 1141, 1142, 1143, 1144, 1145, 1146, 1147, 1148, 1149, 1150, 1151, 1152, 1153, 1154, 1155, 1156, 1157, 1158, 1159, 1160, 1161, 1162, 1163, 1164, 1165, 1166, 1167, 1168, 1169, 1170, 1171, 1172, 1173, 1174, 1175, 1176, 1177, 1178, 1179, 1180, 1181, 1182, 1183, 1184, 1185, 1186, 1187, 1188, 1189, 1190, 1191, 1192, 1193, 1194, 1195, 1196, 1197, 1198, 1199, 1200, 1201, 1202, 1203, 1204, 1205, 1206, 1207, 1208, 1209, 1210, 1211, 1212, 1213, 1214, 1215, 1216, 1217, 1218, 1219, 1220, 1221, 1222, 1223, 1224, 1225, 1226, 1227, 1228, 1229, 1230, 1231, 1232, 1233, 1234, 1235, 1236, 1237, 1238, 1239, 1240, 1241, 1242, 1243, 1244, 1245, 1246, 1247, 1248, 1249, 1250, 1251, 1252, 1253, 1254, 1255, 1256, 1257, 1258, 1259, 1260, 1261, 1262, 1263, 1264, 1265, 1266, 1267, 1268, 1269, 1270, 1271, 1272, 1273, 1274, 1275, 1276, 1277, 1278, 1279, 1280, 1281, 1282, 1283, 1284, 1285, 1286, 1287, 1288, 1289, 1290, 1291, 1292, 1293, 1294, 1295, 1296, 1297, 1298, 1299, 1300, 1301, 1302, 1303, 1304, 1305, 1306, 1307, 1308, 1309, 1310, 1311, 1312, 1313, 1314, 1315, 1316, 1317, 1318, 1319, 1320, 1321, 1322, 1323, 1324, 1325, 1326, 1327, 1328, 1329, 1330, 1331, 1332, 1333, 1334, 1335, 1336, 1337, 1338, 1339, 1340, 1341, 1342, 1343, 1344, 1345, 1346, 1347, 1348, 1349, 1350, 1351, 1352, 1353, 1354, 1355, 1356, 1357, 1358, 1359, 1360, 1361, 1362, 1363, 1364, 1365, 1366, 1367, 1368, 1369, 1370, 1371, 1372, 1373, 1374, 1375, 1376, 1377, 1378, 1379, 1380, 1381, 1382, 1383, 1384, 1385, 1386, 1387, 1388, 1389, 1390, 1391, 1392, 1393, 1394, 1395, 1396, 1397, 1398, 1399, 1400, 1401, 1402, 1403, 1404, 1405, 1406, 1407, 1408, 1409, 1410, 1411, 1412, 1413, 1414, 1415, 1416, 1417, 1418, 1419, 1420, 1421, 1422, 1423, 1424, 1425, 1426, 1427, 1428, 1429, 1430, 1431, 1432, 1433, 1434, 1435, 1436, 1437, 1438, 1439, 1440, 1441, 1442, 1443, 1444, 1445, 1446, 1447, 1448, 1449, 1450, 1451, 1452, 1453, 1454, 1455, 1456, 1457, 1458, 1459, 1460, 1461, 1462, 1463, 1464, 1465, 1466, 1467, 1468, 1469, 1470, 1471, 1472, 1473, 1474, 1475, 1476, 1477, 1478, 1479, 1480, 1481, 1482, 1483, 1484, 1485, 1486, 1487, 1488, 1489, 1490, 1491, 1492, 1493, 1494, 1495, 1496, 1497, 1498, 1499, 1500, 1501, 1502, 1503, 1504, 1505, 1506, 1507, 1508, 1509, 1510, 1511, 1512, 1513, 1514, 1515, 1516, 1517, 1518, 1519, 1520, 1521, 1522, 1523, 1524, 1525, 1526, 1527, 1528, 1529, 1530, 1531, 1532, 1533, 1534, 1535, 1536, 1537, 1538, 1539, 1540, 1541, 1542, 1543, 1544, 1545, 1546, 1547, 1548, 1549, 1550, 1551, 1552, 1553, 1554, 1555, 1556, 1557, 1558, 1559, 1560, 1561, 1562, 1563, 1564, 1565, 1566, 1567, 1568, 1569, 1570, 1571, 1572, 1573, 1574, 1575, 1576, 1577, 1578, 1579, 1580, 1581, 1582, 1583, 1584, 1585, 1586, 1587, 1588, 1589, 1590, 1591, 1592, 1593, 1594, 1595, 1596, 1597, 1598, 1599, 1600, 1601, 1602, 1603, 1604, 1605, 1606, 1607, 1608, 1609, 1610, 1611, 1612, 1613, 1614, 1615, 1616, 1617, 1618, 1619, 1620, 1621, 1622, 1623, 1624, 1625, 1626, 1627, 1628, 1629, 1630, 1631, 1632, 1633, 1634, 1635, 1636, 1637, 1638, 1639, 1640, 1641, 1642, 1643, 1644, 1645, 1646, 1647, 1648, 1649, 1650, 1651, 1652, 1653, 1654, 1655, 1656, 1657, 1658, 1659, 1660, 1661, 1662, 1663, 1664, 1665, 1666, 1667, 1668, 1669, 1670, 1671, 1672, 1673, 1674, 1675, 1676, 1677, 1678, 1679, 1680, 1681, 1682, 1683, 1684, 1685, 1686, 1687, 1688, 1689, 1690, 1691, 1692, 1693, 1694, 1695, 1696, 1697, 1698, 1699, 1700, 1701, 1702, 1703, 1704, 1705, 1706, 1707, 1708, 1709, 1710, 1711, 1712, 1713, 1714, 1715, 1716, 1717, 1718, 1719, 1720, 1721, 1722, 1723, 1724, 1725, 1726, 1727, 1728, 1729, 1730, 1731, 1732, 1733, 1734, 1735, 1736, 1737, 1738, 1739, 1740, 1741, 1742, 1743, 1744, 1745, 1746, 1747, 1748, 1749, 1750, 1751, 1752, 1753, 1754, 1755, 1756, 1757, 1758, 1759, 1760, 1761, 1762, 1763, 1764, 1765, 1766, 1767, 1768, 1769, 1770, 1771, 1772, 1773, 1774, 1775, 1776, 1777, 1778, 1779, 1780, 1781, 1782, 1783, 1784, 1785, 1786, 1787, 1788, 1789, 1790, 1791, 1792, 1793, 1794, 1795, 1796, 1797, 1798, 1799, 1800, 1801, 1802, 1803, 1804, 1805, 1806, 1807, 1808, 1809, 1810, 1811, 1812, 1813, 1814, 1815, 1816, 1817, 1818, 1819, 1820, 1821, 1822, 1823, 1824, 1825, 1826, 1827, 1828, 1829, 1830, 1831, 1832, 1833, 1834, 1835, 1836, 1837, 1838, 1839, 1840, 1841, 1842, 1843, 1844, 1845, 1846, 1847, 1848, 1849, 1850, 1851, 1852, 1853, 1854, 1855, 1856, 1857, 1858, 1859, 1860, 1861, 1862, 1863, 1864, 1865, 1866, 1867, 1868, 1869, 1870, 1871, 1872, 1873, 1874, 1875, 1876, 1877, 1878, 1879, 1880, 1881, 1882, 1883, 1884, 1885, 1886, 1887, 1888, 1889, 1890, 1891, 1892, 1893, 1894, 1895, 1896, 1897, 1898, 1899, 1900, 1901, 1902, 1903, 1904, 1905, 1906, 1907, 1908, 1909, 1910, 1911, 1912, 1913, 1914, 1915, 1916, 1917, 1918, 1919, 1920, 1921, 1922, 1923, 1924, 1925, 1926, 1927, 1928, 1929, 1930, 1931, 1932, 1933, 1934, 1935, 1936, 1937, 1938, 1939, 1940, 1941, 1942, 1943, 1944, 1945, 1946, 1947, 1948, 1949, 1950, 1951, 1952, 1953, 1954, 1955, 1956, 1957, 1958, 1959, 1960, 1961, 1962, 1963, 1964, 1965, 1966, 1967, 1968, 1969, 1970, 1971, 1972, 1973, 1974, 1975, 1976, 1977, 1978, 1979, 1980, 1981, 1982, 1983, 1984, 1985, 1986, 1987, 1988, 1989, 1990, 1991, 1992, 1993, 1994, 1995, 1996, 1997, 1998, 1999, 2000, 2001, 2002, 2003, 2004, 2005, 2006, 2007, 2008, 2009, 2010, 2011, 2012, 2013, 2014, 2015, 2016, 2017, 2018, 2019, 2020, 2021, 2022, 2023, 2024, 2025, 2026, 2027, 2028, 2029, 2030, 2031, 2032, 2033, 2034, 2035, 2036, 2037, 2038, 2039, 2040, 2041, 2042, 2043, 2044, 2045, 2046, 2047, 2048, 2049, 2050, 2051, 2052, 2053, 2054, 2055, 2056, 2057, 2058, 2059, 2060, 2061, 2062, 2063, 2064, 2065, 2066, 2067, 2068, 2069, 2070, 2071, 2072, 2073, 2074, 2075, 2076, 2077, 2078, 2079, 2080, 2081, 2082, 2083, 2084, 2085, 2086, 2087, 2088, 2089, 2090, 2091, 2092, 2093, 2094, 2095, 2096, 2097, 2098, 2099, 2100, 2101, 2102, 2103, 2104, 2105, 2106, 2107, 2108, 2109, 2110, 2111, 2112, 2113, 2114, 2115, 2116, 2117, 2118, 2119, 2120, 2121, 2122, 2123, 2124, 2125, 2126, 2127, 2128, 2129, 2130, 2131, 2132, 2133, 2134, 2135, 2136, 2137, 2138, 2139, 2140, 2141, 2142, 2143, 2144, 2145, 2146, 2147, 2148, 2149, 2150, 2151, 2152, 2153, 2154, 2155, 2156, 2157, 2158, 2159, 2160, 2161, 2162, 2163, 2164, 2165, 2166, 2167, 2168, 2169, 2170, 2171, 2172, 2173, 2174, 2175, 2176, 2177, 2178, 2179, 2180, 2181, 218

WHAT IS TAGLUS ?

>TOUGH

>TRANSPARENT

>FLEXIBLE

Our addition of special grade glycol to PET removes the hazing effect seen during heating and also prevents an undesirable crystallization. Additionally, the inclusion of glycol in this composition transforms the inner walls of aligner/retainer into a more comfortable material to the patient. So the Taglus Tuff is unique engineering combination of elasticity with rigidity and clarity - a perfect balance.

ABOUT TAGLUS TUFF™

Uniaxially oriented amorphous material with polymer chain locked together in a non-specific lattice structure.

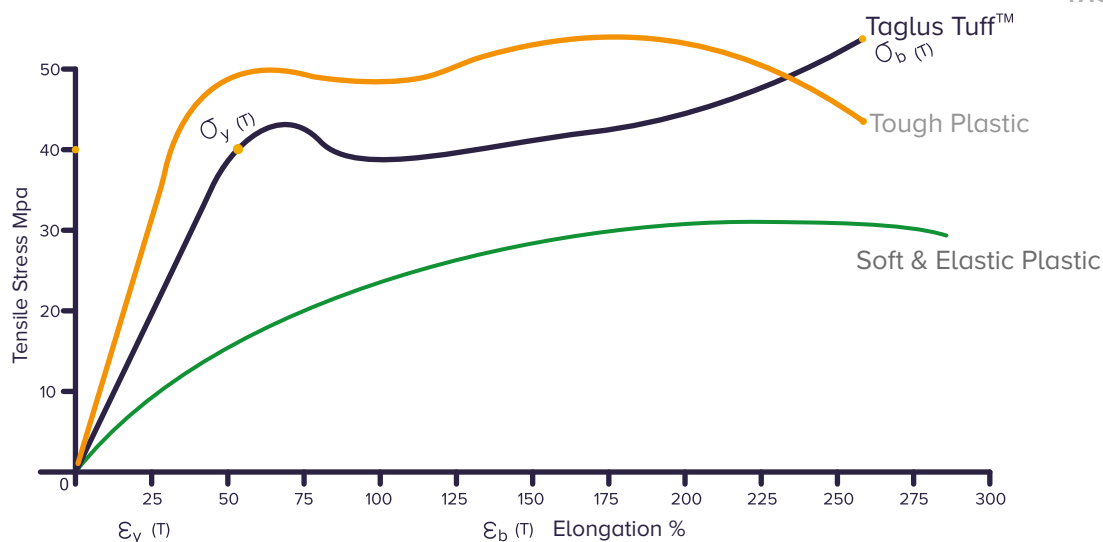
SIZES

DIMENSIONS	THICKNESS	
	(mm)	(Inch)
⌀ 125mm	0.8	0.031"
⌀ 120mm	0.9	0.035"
■ 120mm x 120mm		
■ 125mm x 125mm		

Available in Round, Square, Arch & Roll Form

**Some variations are inherent to plastic testing, and preceeding data is considered to be approximate representative of mean values. Vedia Solutions makes no representation that the material in any representation, in any particular shipment, exactly confirms the values determined. Conversions from customary metric/US values may have been rounded and therefore may not be exact conversions. Neither Vedia Solutions nor its marketing affiliates will be responsible for the use of this information or any product method or device mentioned, and you must make your own determination of its suitability and completeness for your own use and purchasers of your products.

NO WARANTEE IS MADE OF THE MERCHANTABILITY OR SUITABILITY OF ANY PRODUCT AND NOTHING HEREIN STATES ANY OF THE SELLER'S TERMS OF SALE.



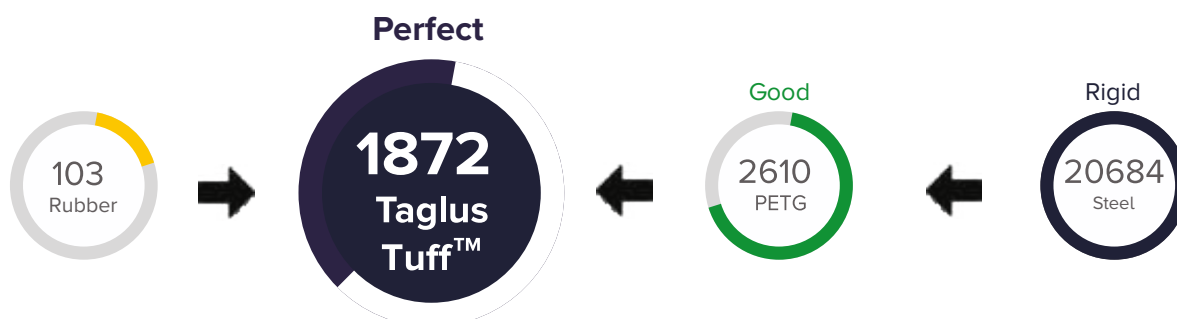
TOUGHNESS

The unique balance of mechanical properties makes TAGLUS Tuff Sheets superior in strength as well as toughness, making it an ideal material for long-term retainers. The retainers fabricated out of this material remain crack-free even after prolonged use in ideal cases.

The properties of Taglus Tuff sheets when investigated using standardized test methods, eg. Tensile stress as per ASTM D 638:2014 by briefly applying load in one direction the approximate results and values observed during such test, demonstrate that Taglus Tuff sheets are a unique balance of strength and toughness. The test was performed by an NABL accredited Laboratory complying with ISO/IEC 17025 Laboratory Management System.

TENSILE MODULUS

Tensile Modulus, or Young's Modulus, widely known as the tendency of an object to deform along an axis when opposing forces are applied along that axis; it is defined as the ratio of tensile stress to tensile strain. Taglus Tuff having a very high tensile modulus of approximately upto 1872MPa, tested as per ASTM D638:2014 makes it the best comfortable aligners and retainers.



CLARITY

The photographs of Taglus Tuff when compared with other PU Based aligner sheets shows a noticeable difference in the clarity of the object placed at a distance from the sheet. Taglus Tuff has the highest clarity in its class.

The raw material used to manufacture TAGLUS is compiled in accordance with various agencies worldwide as follows:

BIOCOMPATIBILITY TESTING

Taglus Tuff sheets have passed biocompatibility testing namely Skin Sensitization, in Vitro Cytotoxicity and Skin Irritation test as a regulatory requirement for demonstrating the preclinical safety of medical devices, this is evaluated in accordance with the standard guideline, published by the US FDA "Use of International Standard ISO10993-1" Biological evaluation of medical devices — Part 1: Evaluation and testing within a risk management process " which can be accessed at <https://www.fda.gov/media/85865/download>, issued on September 4th, 2020 and originally published on June 16th, 2016.

WORKING INSTRUCTIONS: HEATING TIME

	0.030 " 0.8mm	0.035" 0.9mm
BioSTAR MiniSTAR / MiniSTAR S	Code 103 / Code 113 / Code 123	Code 113 / Code 123 / Code 133
Dreve Druformat Scan	Heating - 1:05 Cooling - 1:30	Heating - 1:10 Cooling - 1:40

MiniSTAR/BioSTAR are trademarks of Scheu Dental Technology. Druformat Scan is trademark of Dreve Dentamid. Erkodent is trademark of ERKODENT Erich Kopp GmbH. TRACK®-V is trademark of FORESTADENT - Bernhard Foerster GmbH.

Pressure should be set ABOVE 4 Bars. Temperature is at MACHINE default.

Taglus Sheets are protected by masking sheets, remove the protective sheets AFTER thermoforming and finishing.

Above times are general guidelines only, as each individual machine acts slightly different.

If the plastic does not adapt well to the model, add or reduce 5 seconds to heating time until the result is ideal.

If plastic forms folds, results in NOT clear tray OR shows bubble formation, recalibrate your heating element or reduce heating time until the result is ideal. For any clinical and Lab related questions, please do not hesitate to contact us at info@taglus.com and in case of any serious incident that has occurred in relation to this medical device contact us at info@taglus.com and the competent authority of the Member State in which the user and/or patient is established.

THERMOFORMING RETAINER SHEETS



TAGLUS TUFF
The Ultimate Retainer Material ("Patent Pending")

 TAGLUS ARCH

Patent - Pending*



Over the years Taglus has grown to become one of the world's leading providers of newer, technologically advanced dental products. Uncompromised quality and customer focus have been important goals throughout this journey. As we continue to grow, we have decided to step up and expand our goals. Taglus now commits to greener smiles.

INTRODUCING TAGLUS ARCH

Patent-pending, unique dental arch-shaped thermoforming sheets. Clear, biocompatible, and durable, the Taglus Arch variant is available with both Taglus Premium and Taglus Tuff.



MAKE A DIFFERENCE WITH TAGLUS ARCH



LESS WASTAGE

During fabrication, a considerable amount of sheet around the thermoformed appliance is discarded and generates waste. With continuous research and development, we innovated an exclusive design that reduces the thermoplastic material consumption per appliance without affecting its clinical performance. The distinct design of Taglus Arch sheets represents our commitment to creating positive environmental changes.

COST-EFFECTIVE

Even though the production process is more complex we have managed to reduce the price while keeping the same quality that we pride on for our Taglus customers.

EASY FINISHING

Another highlight of Taglus Arch sheets is the presence of 5 distinct slits at the periphery. They facilitate trimming off excess material post-fabrication and allow for convenient removal of the appliance from the model.

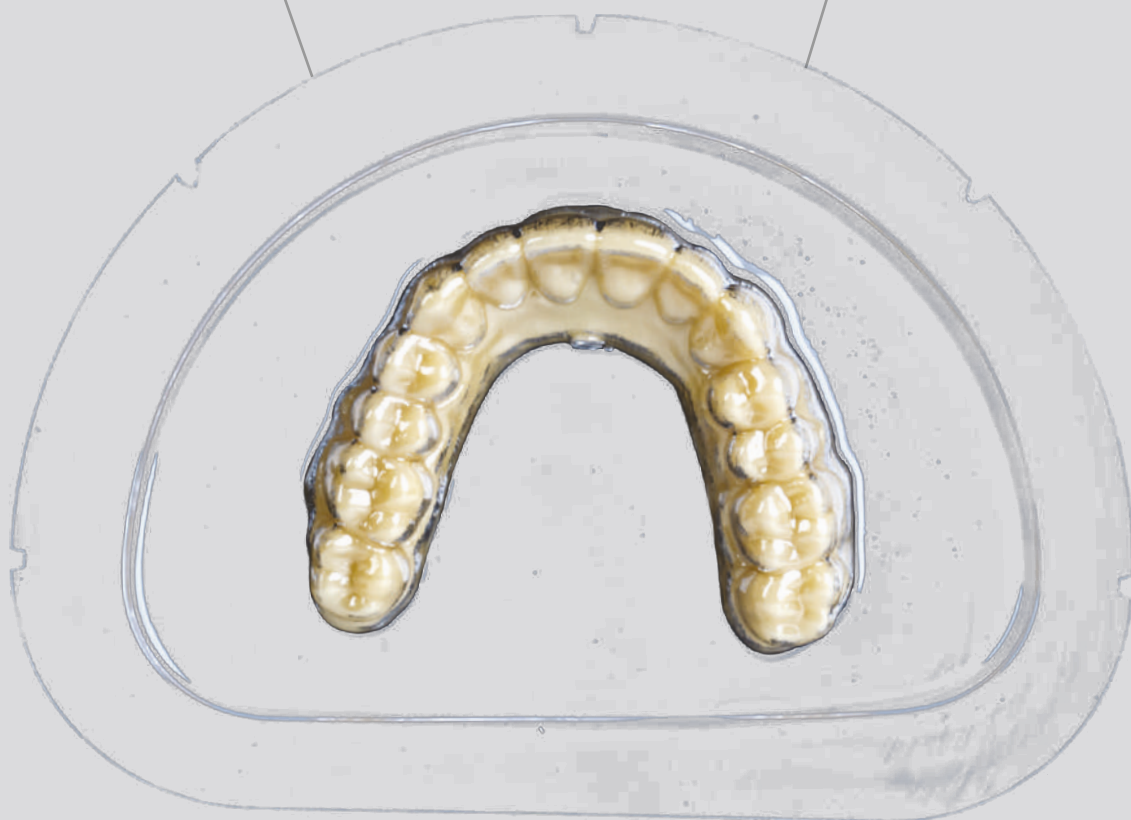


WHY UPGRADE TO TAGLUS ARCH?

**GREATER VALUE
WITH REVISED PRICING**

**PROMOTE
SUSTAINABLE DENTISTRY**

**MORE CONVENIENT
WORKFLOW**





AVAILABLE THICKNESS



Taglus Premium	0.020"	0.030"	0.042"
	(0.5mm)	(0.762mm)	(1.020mm)

Taglus Tuff	0.030" (0.8mm)
-------------	-------------------





WORKING CODES:

Time to Heat

Taglus Premium					
	0.020" (0.5mm)	0.030" (0.762mm)	0.042" (1.020mm)	0.060" (1.5mm)	0.080" (2.0mm)
BioSTAR MiniSTAR/ MiniSTAR S	Code 103/ Code 113	Code 103/ Code 113/ Code 123	Code 113/ Code 123/ Code 133	Code 133 / Code 143 / Code 153	Code 184 / Code 194 / Code 204
Dreve Druformat Scan	Heating - 0:55 Cooling - 1:20	Heating - 1:05 Cooling - 1:30	Heating - 1:10 Cooling - 1:40	Heating - 1:30 Cooling - 2:00	Heating - 2:00 Cooling - 2:20

Taglus Tuff Retainer	
	0.030" (0.8mm)
BioSTAR MiniSTAR/ MiniSTAR S	Code 103 / Code 113 / Code 123
Dreve Druformat Scan	Heating - 1:05 Cooling - 1:30

MiniSTAR/BioSTAR are trademarks of Scheu Dental Technology. Druformat Scan is trademark of Dreve Dentamid. Erkodent is trademark of ERKODENT Erich Kopp GmbH. TRACK®-V is trademark of FORESTADENT - Bernhard Foerster GmbH.

Pressure should be set ABOVE 4 Bars. Temperature is at MACHINE default.

Taglus Sheets are protected by masking sheets, remove the protective sheets AFTER thermoforming and finishing.

Above times are general guidelines only, as each individual machine acts slightly different.

If the plastic does not adapt well to the model, add or reduce 5 seconds to heating time until the result is ideal.

If plastic forms folds, results in NOT clear tray OR shows bubble formation, recalibrate your heating element or reduce heating time until the result is ideal. For any clinical and Lab related questions, please do not hesitate to contact us at info@taglus.com and in case of any serious incident that has occurred in relation to this medical device contact us at info@taglus.com and the competent authority of the Member State in which the user and/or patient is established.



HOW TO USE TAGLUS ARCH?

Taglus Arch aims to lower manufacturing costs by eliminating the investment in expensive and space-consuming equipment. We have innovated an exclusive Taglus Arch Adaptor Kit that can easily be used with thermoforming units such as Biostar, Ministar, Erkodent, Dreve Druformat. It has components that serve as extensions and can be placed over your existing thermoforming unit.



TAGLUS ARCH ADAPTOR KIT



THERMOFORMING SOLUTIONS



**TAGLUS
AUTOFORM (SHEETS)**



**TAGLUS
AUTOFORM (ROLL)**



**TAGLUS
DUOFORM**

TAGLUS AUTOFORM

ALL IN ONE THERMOFORMING MACHINE FOR Ø125MM SHEETS



Capacity:

120 - 140*

Per Hour



✦ Compatible with material thickness from **0.5 mm to 5 mm**

- ☑ Retainers
- ☑ Aligners
- ☑ Mouth guards
- ☑ Night guards
- ☑ Bleaching trays & more



Technical specifications

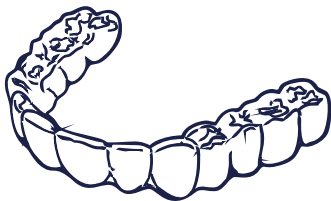
Production capacity (per hr) :	120 - 140* nos.
Forming film diameter (MAX)	125mm
Forming film thickness (MAX)	5mm
Forming height above film line (MAX)	30mm
Forming pressure (MAX)	4-5 bar
Heating power	750w
Forming tables driven by	electric drive
Total installed power	2.5kw
Power supply	110v +G 50Hz
Dimensions (mm)	1296 H X 1145 L X 690 W
Weight	380kgs



AUTOFORM ROLL

WORLD'S SMALLEST AUTOMATED THERMOFORMING ROLL MACHINE

This revolutionary device is designed to transform the production of dental aligners. Despite its compact size, it packs a powerful punch with its impressive production capacity.



Capacity:

120^{*} Per Hour

LOWER YOUR PER ALIGNER COST



DIMENSIONS(mm) :
1620 H X 860 L X 710 W



Technical Information	
Productions Capacity (per hour)	120 ⁺ Nos.
Forming film Roll diameter (max.)	500 mm
Forming film thickness (max.)	1.5 mm
Forming film Width (max.)	101 mm
Forming area (max.)	100 x 85 mm
Forming height above film line (max.)	30 mm
Forming pressure (max.)	5 - 6 bar
Heating power	1 KW
Forming tables driven by	Pneumatic Drive
Total installed power	1.5 kW
Air consumption	70 Ltr./ Cycle
Power supply	220 V (1- Phase) 50 Hz
Estimated Machine weight	~300 Kg

TAGLUS DUOFORM

Innovative pressure moulding technique for practice and laboratory – quick, compact and precise.



Voltage - 110V/ 220V (AC) - 50/60 hz

power - 750W

Pressure - 60PSi / 4 BAR

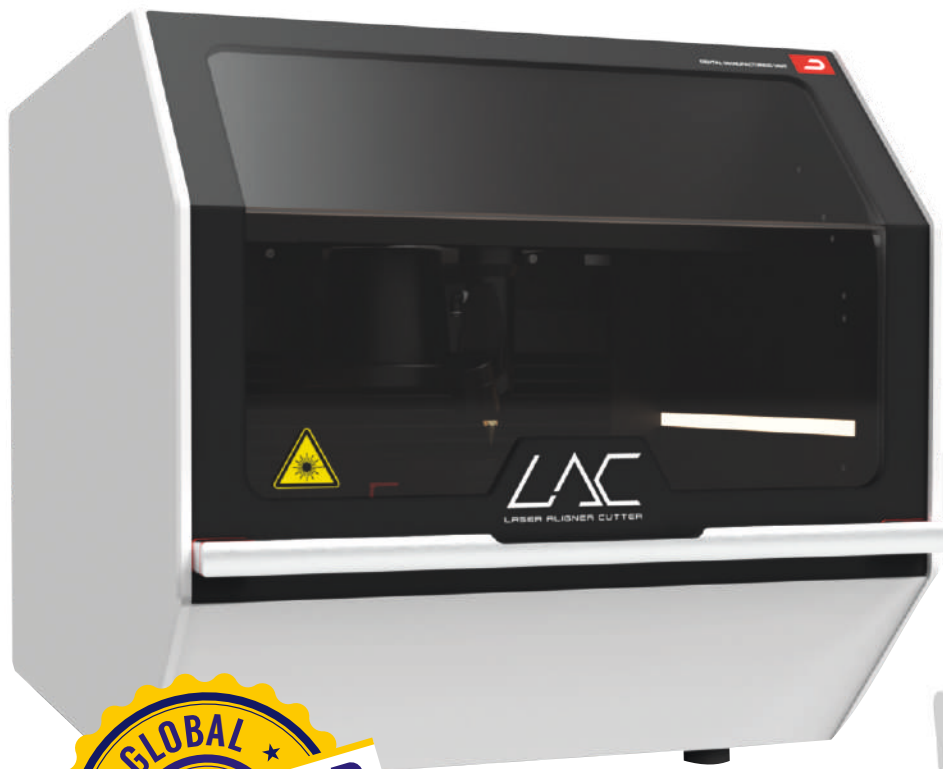
W*D*H - 395mm*390mm*225mm

Weight - 15 kgs.

Features :

- Working Temperature Reached within 1 Second 4 bar forming pressure.
- Clearly Structured Display
- Instant heating with shortwave infrared heaters.
- Special arch design machine for Taglus arch sheets.
- Acoustically and Optically Assisted Operator Guidance Easy to use interface
- 4.3 inch touchscreen display
- Also Compatible with \varnothing 125mm sheets

AUTOMATED TRIMMING SOLUTIONS



LAC
LASER ALIGNER CUTTER



The LAC is easy to use and the integrated control system takes care of all the tasks

Attractive and healthy teeth are among our most important beauty ideals today. For a winning and shining smile, more and more adults are undergoing aesthetic dental care.

They have needs: Tooth correction should be as invisible and fast as possible.

This also creates the need for increasingly efficient production solutions for dental laboratories and dental practices.

With the LAC (Laser Aligner Cutter), it is possible for the first time to produce clear aligners that do not require any additional post-processing after cutting. This saves time and personnel resources.



“All you have to do is remove the finished aligner - every minute.”

LAC also offers an engraving function and a digital interface to the most popular planning software packages. Its integrated control system with a web interface allows for easy monitoring and control of the cutting process. Additionally, our camera-based aligner for Trimline matching ensures precise cutting every time, eliminating any guesswork.



WATCH DEMO

What makes the LAC outstanding

 AUTOMATIC CUTTING

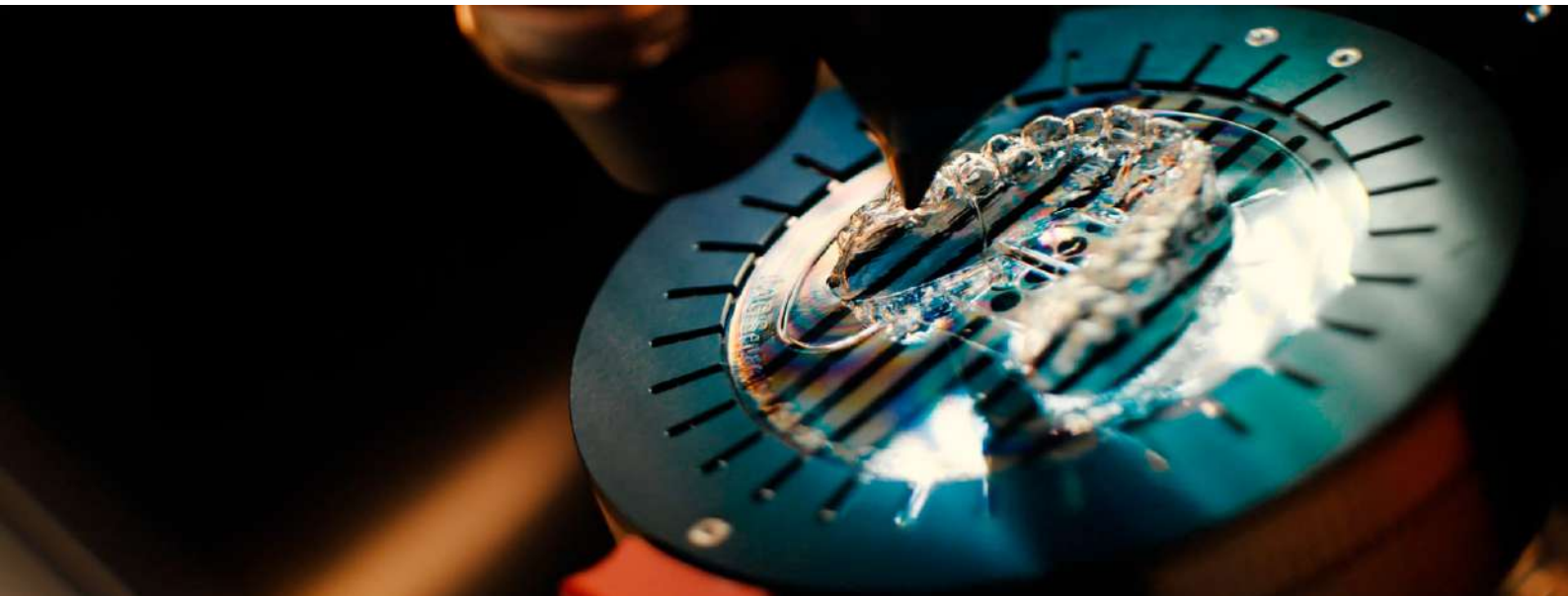
 NO POST-PROCESSING

 WORKS WITH ANY MODEL

 CUTS IN LESS THAN 1 MIN

 ENGRAVING FUNCTION

 COMPATIBLE WITH ALL MAJOR THERMOFORMING SYSTEMS



TECHNICAL SPECIFICATIONS

Aligner

Process time (Aligner cut)	approx. 60-90s
Aligner foils diameter	ø120-125mm
Aligner foils height	0,25-1mm
Repeat accuracy	±0,1mm

Laser

Laser type	Co ²
Laser power	20W
Wavelength	9,3µm
Laser class of product	Class 1
Cooling	Air-cooled

Power

Voltage	Single-phase 110-230, 50/60Hz
Power consumption	900W

Interfaces

Hardware Interface	Gigabit Ethernet (IEEE 802.3)
Software Interface	Import of universal aligner data (model as STL and trim line as PTS, CSV or XYZ file)

Suction Unit (requirements)

Connection diameter	ø50mm
Air flow rate (unimpeded)	240m ³ /h
Filter	<ul style="list-style-type: none">• Prefilter mat G4• HEPA filter H13• Activated carbon

General

W / L / H (opened)	20x880x640mm (980mm)
Weight	78kg
Noise level	65db(A)



Lift clear aligners from the model conveniently and non-destructively

Elevate your results with this simple and time-saving solution. LAC Separator enables comfortable detachment of aligner foils from the model without causing any deformations



The LAC Separator is an innovative solution for safe and easy separation of aligner foils from the model, compatible with any model and all common thermoformers. With separator, you can separate the aligner foil from the model in less than 10 seconds using a simple lever – no electricity or compressed air required. This solution is user-friendly and can be used without any special skills or training.

INTRODUCING PIN OVER BAR SEPRATOR



What makes the LAC Separator outstanding



Safe & easy separation of aligner foil and model



Separated in less than 20 seconds



Operates with a simple lever without electricity or compressed air



Works with any model



Compatible with all major thermoforming systems

TECHNICAL SPECIFICATIONS

Aligner

Process time for one Aligner separation	approx. 20-35s
Aligner foils diameter	Ø120-125mm
Aligner foils height	0.25-1mm

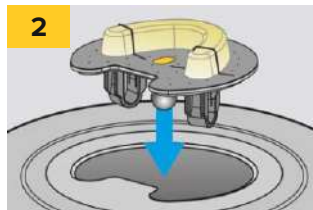
General

W / L / H (opened)	approx. 145x385x215mm
Weight	4kg

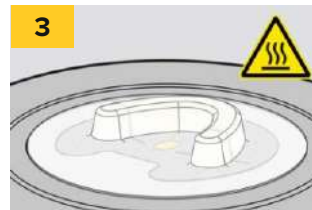
How It Works



1
Place the tooth model on the vacuum disc under the separation thread



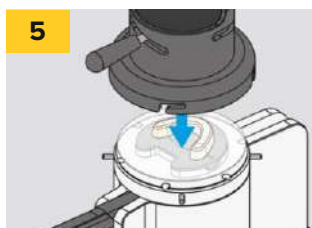
2
Insert the vacuum disk into the thermoforming unit using the adapter ring suitable for your unit



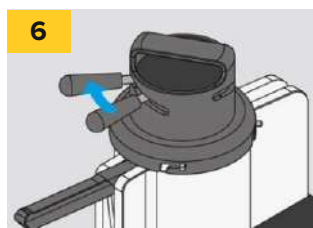
3
Thermoforming: Insert the aligner foil into the thermoforming unit and thermoform the aligner.



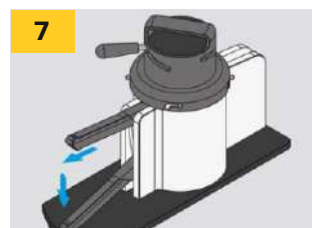
4
After thermoforming, insert the aligner with the vacuum disc into the separator



5
Place the vacuum lid on the separator and secure it with a rotary motion



6
Use the lever on the lid to create a vacuum, which is used as counterpressure for the separating process.



7
Pull the lever towards you and down to separate the tooth model from the aligner foil.



8
Unlock and remove the vacuum lid. Now the separated aligner can be removed and is ready for further processing.

ADAPTERS AVAILABLE

Adapter rings come in different sizes depending on the thermoforming unit and manufacturer. Please select the appropriate one for your device.



Erkodent Erkoform™



Erkodent Erkopress Motion™



Barth Medical® B-Form



Set - Scheu Ministar™



Set - Scheu Biostar™



Dreve Dentamid Druformat Scan



Aixin AX-PMU4



TIPP

You can also produce several aligners simultaneously by using more vacuum discs and by equipping additional thermoforming units with adapters.

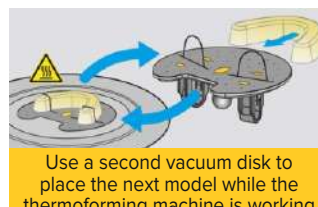
SPARE PARTS



Separating thread [Set of 10 pairs]



Vacuum Disc [without threads]



Use a second vacuum disk to place the next model while the thermoforming machine is working on the already inserted model.

To ensure a clean and safe working environment and achieve high-quality cutting results, the LAC Suction Unit, which is specifically designed to match the LAC, is indispensable.

The LAC Suction Unit ensures optimal airflow, which is essential for achieving perfect cutting and edging quality. With its three-stage filter system, including a pre-filter mat (G4), HEPA filter (H13), and activated carbon cassette, the LAC Suction Unit effectively captures harmful pollutants, ensuring purified air for a healthier workspace.



Say goodbye to harmful emissions and hello to a healthier and safer work environment with the **LAC Suction Unit**

TECHNICAL SPECIFICATIONS

Power

Voltage	Voltage Single-phase 110-230, 50/60Hz
Power consumption	240W

General

W / L / H	340x430x600mm
Weight	36kg
Noise level	56db(A)



Pre-Filter G4 [Set of 10 pcs]
up to 300 cuts/filter



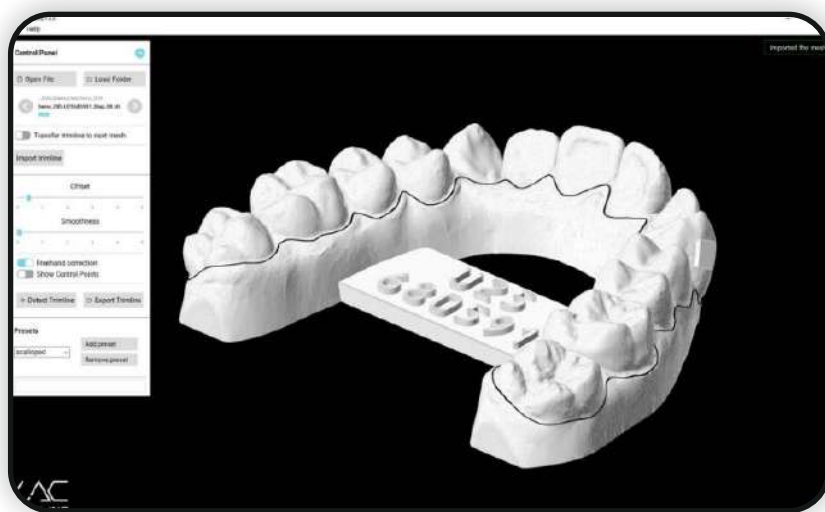
HEPA-Filter H13
up to 2000 cuts/filter



Activated Carbon Filter 3m2
up to 10000 cuts/filter

Replacing the filter elements is crucial for a clean and high-quality cut and edge. The LAC - Laser Aligner Cutter web interface informs you when it is reasonable to change the respective filter element.

Trimline automatically finds the appropriate cutting line fully automatically. Open the model STL file, generate cutting line, export, done.



LAC Trimline Generator analyses the dental arch and finds the appropriate cutting line fully automatically. You can choose between a straight or a shell cut. Individual line points can be edited as required. The software is compatible with any STL 3D file used for 3D printing. With just one click, the PTS file matching the 3D model is exported. LAC Trimline Generator is the missing piece of the treatment planning puzzle.

LICENSE MODELS

Decide between the flexible subscription license or the lifetime license.

TRIMLINE GENERATOR Full Purchase

- Single payment
- Updates included
- Lifetime usage



TRIMLINE GENERATOR Annual Charge

- Yearly payment
- Updates included



SYSTEM REQUIREMENTS

- Supported operating system: Microsoft Windows 10 (64-bit) or higher
- CPU: Intel x86 architecture with 64-bit support (x86-64) or comparable with at least 2.00 GHz clock speed
- RAM: At least 4 GB of RAM
- GPU: Standard Intel HD Graphics 620 or equivalent sufficient
- Other: 100MB hard drive space for installation



3D PRINTING RESINS



ABOUT US

Taglus was founded in the year 2018. Taglus Resins are a range of quality liquid resins offering best results for 3D printing. The aim was to introduce superlative quality resins perfect for 3D printing. In-office dental 3D printing helps improve the efficiency of forward-thinking practices all over the world. By leveraging existing technologies that exist in digital dentistry, 3D printing enables better responsiveness to patient needs, significantly reduces manufacturing times, and opens up new treatment options. Taglus Resins are evaluated in accordance with Medical devices -

Part 1: Evaluation and testing within a risk management process, and ISO7405:2009 / (R)2015, Dentistry-Evaluation of bio-compatibility of medical devices used in dentistry, and passed the requirements for the following biocompatibility risks: Cytotoxicity, Skin Irritation and Skin Sensitization. The product was developed and complies with the following ISO Standards: Medical Devices – Quality Management Systems – Requirements for Regulatory Purposes EN ISO13485:2016 from a certified lab that complies with the Quality Management System as per ISO/IEC 17025:2005.

WHY CHOOSE TAGLUS RESIN

Taglus Resins are engineered with properties to demonstrate excellent results with respect to 3D printing. Our Dental solutions are designed for use in dental laboratories, making production methods faster, easier and more effective.

MACHINE COMPATIBILITY

All 3D printers that use DLP & LCD as their printing techniques.

MODEL RESIN

TAGLUS model resin is a material based on meth(acrylate) resin for DLP with 385 nm / 405 nm LED & LCD systems for the production of dental models.

It is a high-precision & high-accuracy resin with a smooth matte surface finish, perfect for dental model making. The resin has High form and break stability & is abrasion, moisture and light resistant.



USES

- ☐ Crown & Bridge Models
 ☐ Clear Aligner Models
- ☐ Orthodontic Models
 ☐ Diagnostic Models
- ☐ Implant Models
 ☐ Stubs

PROPERTY	VALUE	METHOD
Hardness R scale	105	ASTM D 785:2008
Flexural Modulus of Elasticity kgf/cm ²	10433	ASTM D 790-2017
Elongation @ Break %	1.71	ASTM D 638-2014
Tensile Strength kgf/cm ²	205	ASTM D 638-2014
Izod Impact Strength, Notched	23	ASTM D 256 Method A:2010e1
Viscosity MPa	300	ASTM D216-2
Colour	Beige	TM18

REDEFINE YOUR SCOPE OF 3D PRINTING

WASHABLE

WITH DISTILLED
WATER

LOW ODOUR,

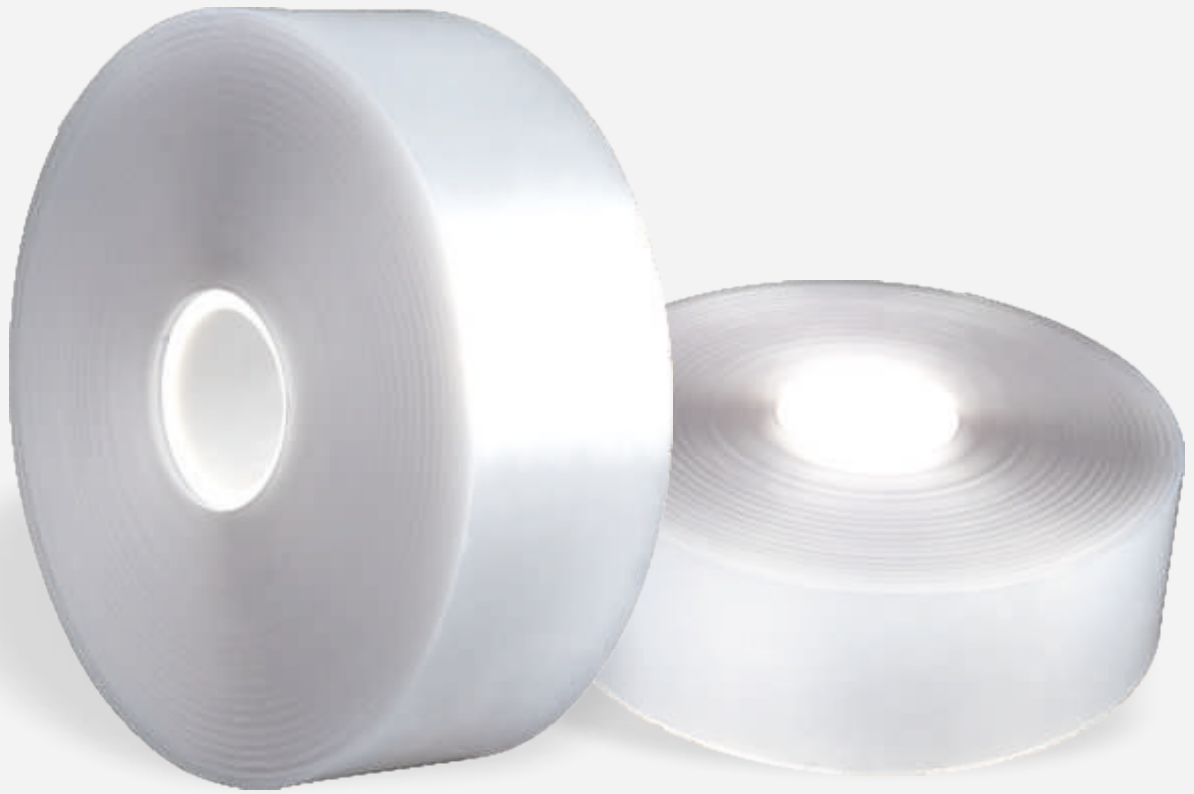
BEFORE & AFTER
3D PRINTING



- ☑ SMOOTH MATTE SURFACE FINISH
- ☑ HIGH DIMENSION ACCURACY (DEVIATION < 50 MICRONS)
- ☑ COMPATIBLE FOR 3D PRINTER WITH 385NM/405NM LIGHT SOURCE
- ☑ FASTER IPA WASHING
- ☑ NON-STICKY AFTER WASHING



AUTOMATED THERMOFORMING



**ALIGNER AND RETAINER SHEETS
NOW AVAILABLE IN ROLL FORM**

VALIDATED BY



AUTOFORM ROLL

AUTOMATED THERMOFORMING ROLLS

Taglus aligners and retainer rolls are the best options if you are using automated thermoforming machines. They are available in a wide range of thicknesses, dimensions, and materials according to the need of the aligner company. Taglus rolls aim to increase production capacity while reducing material cost up to 73%.

ROLL WIDTH (mm)	ROLL THICKNESS WITHOUT MASKING (mm)	MASKING THICKNESS (mm)	TOTAL THICKNESS (mm)	ROLL DIAMETER (mm)	ROLL IN METER	ROLL WEIGHT (KG)
-----------------------	---	------------------------------	----------------------------	--------------------------	---------------------	------------------------

TAGLUS PU FLEX ROLL 0.762 MM

101.06	0.762	0.1	0.862	420	153.26	16.02
137.00						21.71
254.00						40.26

TAGLUS PU FLEX ROLL 1.02 MM

101.06	1.02	0.1	1.12	420	117.96	16.02
137.00						21.71
254.00						40.26

TAGLUS PREMIUM ROLL 0.762 MM

101.06	0.762	0.1	0.862	420	153.26	16.95
137.00						22.98
254.00						42.61

TAGLUS PREMIUM ROLL 1.02 MM

101.06	1.02	0.1	1.12	420	117.96	16.95
137.00						22.98
254.00						42.61

AUTOMATED THERMOFORMING ROLLS

ROLL WIDTH (mm)	ROLL THICKNESS WITHOUT MASKING (mm)	MASKING THICKNESS (mm)	TOTAL THICKNESS (mm)	ROLL DIAMETER (mm)	ROLL IN METER	ROLL WEIGHT (KG)
TAGLUS TUFF ROLL 0.80 MM						
101.06	0.8	0.1	0.9	420	146.79	15.88
137.00						21.53
254.00						39.93

WE STRONGLY RECOMMEND

 **AUTOFORM ROLL**

WORLD'S SMALLEST AUTOMATED THERMOFORMING ROLL MACHINE

FOR OPTIMAL RESULTS WITH TAGLUS ROLLS

TO KNOW MORE CONTACT: +91 9930905047





ORTHODONTIC ACCESSORIES



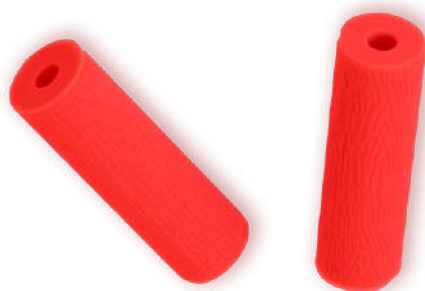
TAGLUS ORTHODONTIC ACCESSORIES

TAGLUS RETAINER BOXES

Taglus Retainer Boxes are created using a unique in-house injection moulding process and are made of high-quality material.

WHY ARE OUR RETAINER AND ALIGNER BOXES DISTINCT?

- Customizable with your brand's logo & colours
- Sturdy and lightweight
- Magnetic closure
- Competitive prices



TAGLUS ALIGNERS CHEWIES

Taglus Aligner Chewies are made of high-quality Silicon material, allowing comfortable seating of aligner trays. They are available in attractive colours.

THEY'RE IDEAL FOR:

- Proper aligner placement
- Ensuring Oral Hygiene

TAGLUS ALIGNER REMOVAL TOOLS

Made with safe plastic material, it helps to remove the invisible aligners and retainers safely and quickly without damaging them and the attachments. The compact design fits into the aligner/retainer box easily.

TAGLUS ALIGNER REMOVAL TOOLS PROVIDE:

- Comfortable grip
- Two-sided hook
- Prevents gum injuries



Item	Packaging Size
Taglus Retainer Box	100pcs / Box
Taglus Aligner Chewies (Pair of 2)	
Taglus Aligner Removal Tool	



SCAN TO VIEW THE PRICELIST



CERTIFIED BY

Wellkang Ltd, Enterprise Hub,
NW Business Complex,
1 Beraghmore Rd, Derry,
BT48 8SE, Northern Ireland



Wellkang Ltd
(www.UKCA-marking.com)
16 Castle St., Dover,
CT16 1PW, England



ANVISA
Brazil & South America



✉ info@taglus.com 🌐 www.taglus.com

follow us at



@taglus



taglus_official



taglus



@taglus

TAGLUS, TAGLUS logo, Taglus products are trademarks of Vedia Solutions and its affiliates in India. The Taglus logo is a brand of Vedia Solutions and its affiliates in India